



WEDDINGS



MESSAGE FROM THE HOTEL MANAGER

We are delighted to present our exquisite Wedding Venue and services that promise to transform your special day into an unforgettable celebration of love. Our unique hotel is nestled on a lakeside location in the heart of the beautiful Chiltern Hills and Thames Valley

We understand that each couple is unique, and your wedding should reflect your individual style and preferences. Our dedicated team of wedding planners are committed to bringing your vision to life, from conceptualization to execution. We offer a range of customised packages, ensuring that every detail is meticulously planned and flawlessly executed.

For enquiries, bookings, or to schedule a private tour of our exquisite venue, please contact our dedicated wedding specialists at weddings@cpmarlow.co.uk Your dream wedding begins here.

Yours Sincerely,

A handwritten signature in black ink, reading "Mihaly Tar".

Mihaly Tar

Hotel Manager

WEDDING THEMES

BESPOKE

Craft your dream day with our Bespoke Wedding Package. Tailor every detail to your vision, from elegant decor to exquisite menus. A celebration as unique as your love story. Our dedicated wedding manager would be delighted to discuss all available possibilities with you and curate a tailor-made package that perfectly aligns with your vision for your special day.

MARLOW PACKAGE

Elevate your Wedding with a curated Asian Banqueting Menu, enveloped in elegance. Enjoy three starters, three main courses (including vegetarian options), fragrant rice, naan, and two desserts. Dedicated event manager and event operations team as well as other additional items as inclusive.



LAKESIDE PACKAGE

The perfect package for Wedding Receptions; includes up to two canapes and a reception drink on arrival; as well as four starters, four mains and two desserts from our extensive award winning Asian Banqueting Menu

FOUNTAIN PACKAGE

The Fountain Package which leaves no detail untouched, includes up to four canapes, a reception drink on arrival everything in the Lakeside Package, as well as Masala Chai & Coffee and your first anniversary stay in the Hotel including dinner, breakfast & spa treatments.

THE CONSERVATORY

Discover a world where nature’s beauty intertwines with timeless elegance - welcome to the heart of celebration, our extraordinary Conservatory at Crowne Plaza Marlow. Imagine a wedding immersed in the embrace of panoramic vistas, where meticulously landscaped gardens meet the serenity of a glistening lake.

Step into a realm where every instant is a masterpiece painted by nature herself. Our Conservatory invites you to experience the magic of the great outdoors, while reveling in the comforts of refined sophistication. As you exchange vows and create everlasting memories, the expansive windows frame views of the surrounding beauty, making each moment a harmonious blend of luxury and nature’s embrace.

Adjacent to our lush gardens, the Conservatory is a jewel perfectly suited for your wedding breakfast or civil ceremony. The floor-to-ceiling windows unveil breathtaking vistas across the lake, casting an enchanting ambiance that mirrors the depth of your love story. Venture onto the manicured lawns with direct access from the Conservatory, seamlessly transitioning from indoor elegance to open-air grandeur.

CAPACITY

- 300 Standing Reception
- 200 Civil Ceremony
- 180 Wedding Breakfast

DIMENSIONS

Length: 34.5m
Width: 8.21m

VIRTUAL TOUR



THE LAWNS

Nestled in nature’s embrace, our hotel boasts 5 acres of enchanting grounds adorned with breathtaking views of the serene lake. This idyllic setting provides an exquisite backdrop for your dream wedding, where lush greenery meets the tranquil ripples of the water. Imagine exchanging your vows amidst the beauty of the outdoors, with the shimmering lake. Adjacent to this captivating vista is our elegant conservatory, offering a seamless blend of indoor luxury and outdoor splendour.

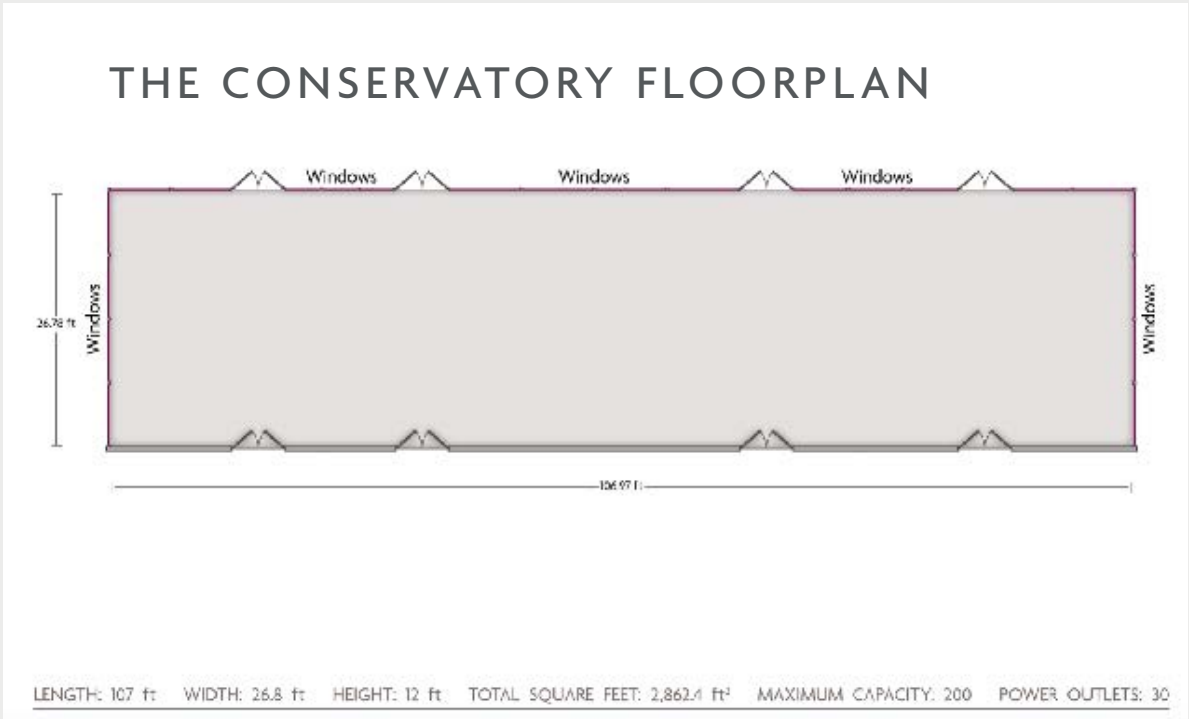
CAPACITY

- 450 Traditional Ceremony
- Enquire for Bespoke Setup

DIMENSIONS

Length: 50m
Width: 40m

VIRTUAL TOUR



THE WINTERLAKE SUITE

VIRTUAL TOUR

Experience the elegance of the Winterlake Suite: A Perfect Venue for Your Dream Wedding. This exquisite suite offers a picturesque setting for your special day, accommodating up to 450 guests. Immerse yourself in the breathtaking views of our serene lake and lush lawns, enhanced by cutting-edge lighting that can be tailored to the ambiance you desire. Step onto the private balcony, which opens to the charming lawns below – a perfect space for hosting joyful moments or a firework finale over the lake, that will be remembered by all.

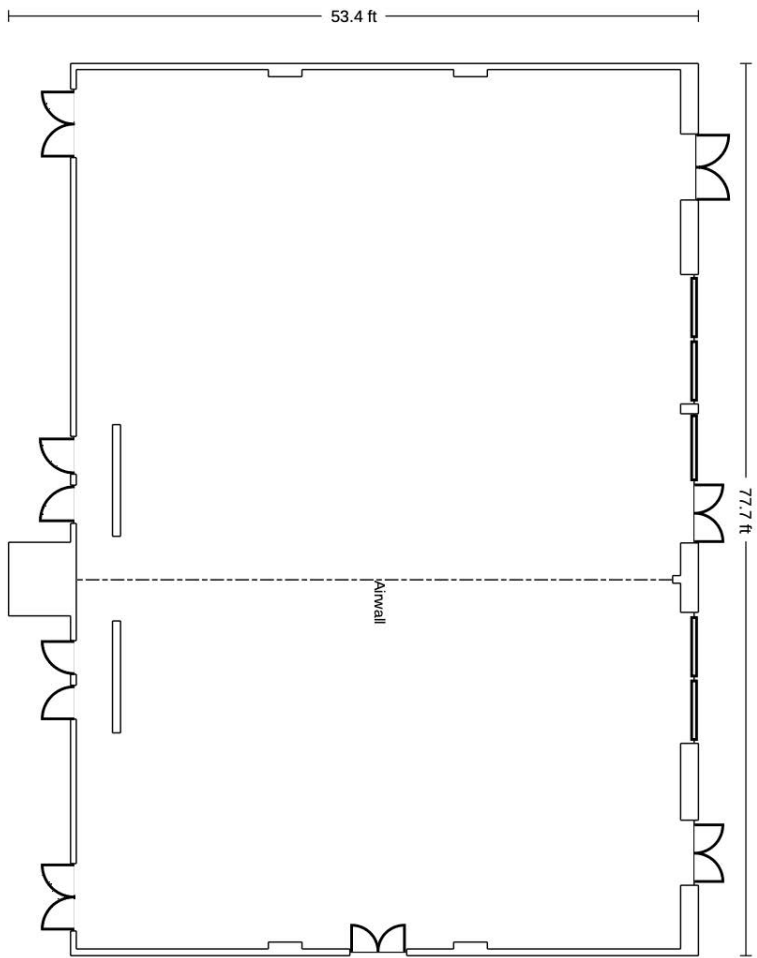
COMBINED

DIMENSIONS

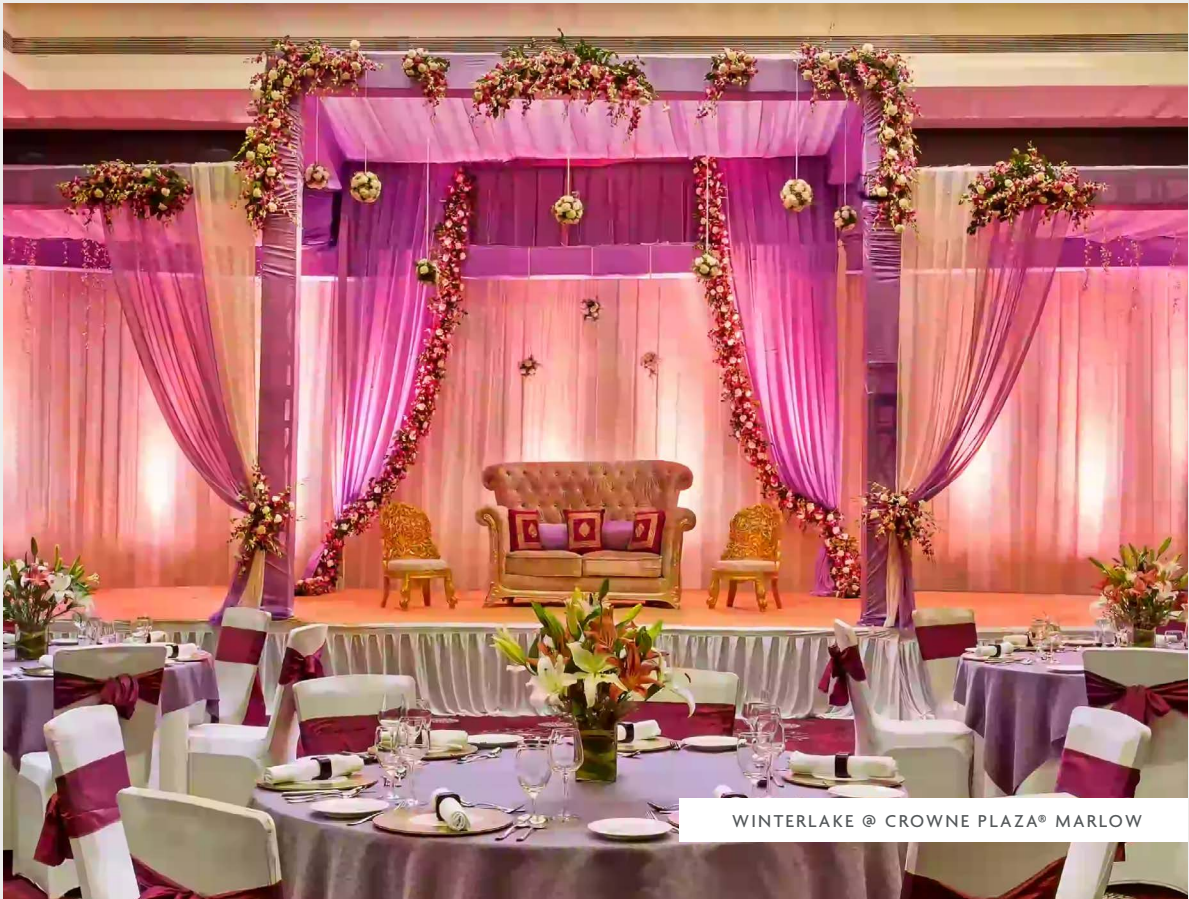
LENGTH: 34.5M, WIDTH: 8.21M

CAPACITY

- 400 Standing Reception
- 450 Civil Ceremony
- 300 Wedding Breakfast



LENGTH: 53.4 Ft. WIDTH: 77.7 Ft. HEIGHT: 12.8 Ft. TOTAL SQUARE FEET: 4169.7 Sq Ft MAXIMUM CAPACITY: 450 POWER OUTLETS: 24



WINTERLAKE 1



THE WINTERLAKE SUITES

Discover the charm of the Winterlake 1 or Winterlake 2 Suites: Ideal spaces for more Intimate Weddings. Either suite provides an enchanting backdrop for your special day, perfect for hosting guests. Delight in the tranquil views of our serene lake and lush lawns, accentuated by customizable lighting to set the desired ambiance. Step out onto the private balcony, which overlooks the picturesque lawns below – both delightful spaces for creating cherished memories.

WINTERLAKE 1

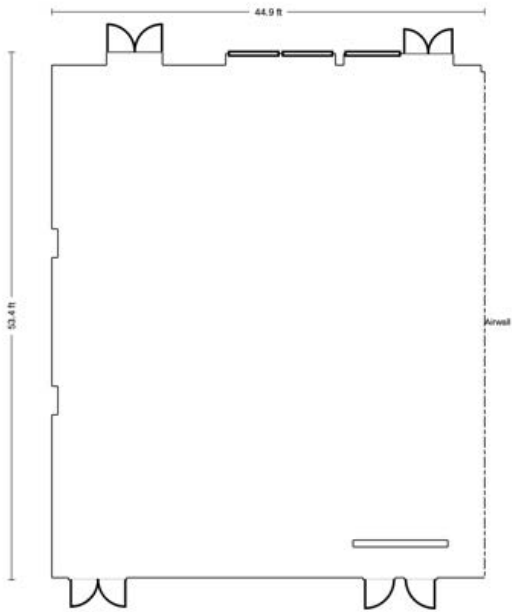
DIMENSIONS

LENGTH: 34.5M, WIDTH: 8.21M

VIRTUAL TOUR

CAPACITY

- 200 Standing Reception
- 200 Civil Ceremony
- 170 Wedding Breakfast



LENGTH: 44.9 FT. WIDTH: 53.4 FT. HEIGHT: 12.7 FT. TOTAL SQUARE FEET: 2427.3 Sq Ft MAXIMUM CAPACITY: 230 POWER OUTLETS: 18

WINTERLAKE 2

WINTERLAKE 2

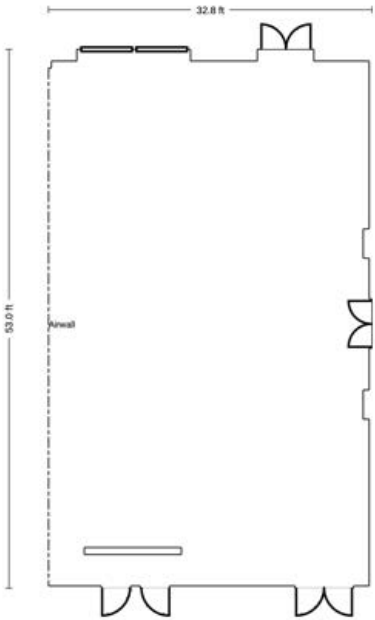
DIMENSIONS

LENGTH: 34.5M, WIDTH: 8.21M

VIRTUAL TOUR

CAPACITY

- 110 Standing Reception
- 150 Civil Ceremony
- 130 Wedding Breakfast



LENGTH: 32.8 FT. WIDTH: 53.0 FT. HEIGHT: 12.8 FT. TOTAL SQUARE FEET: 1743.8 Sq Ft MAXIMUM CAPACITY: 220 POWER OUTLETS: 20



SERVICE OPTIONS

SERVICE OPTIONS

At our Hotel, we offer a range of wedding services to suit your needs. Choose from dry hire or let us craft a tailored bespoke event to make your dream wedding a reality. We provide a team of highly talented Indian Tandoor and Curry Chefs.

- Premade Event Themes
- Bespoke Event Themes
- Dry Hire

DESIGN YOUR OWN MENU

Elevate your event with a personalised touch. Design your own culinary journey from our extensive AA Rosette awarded Banqueting Menus. Create a menu as unique as you are, crafting unforgettable flavors that reflect your individuality and preferences.

ALLERGIES AND
FOOD PREFERENCES

At Crowne Plaza Marlow, we understand the significance of personal preferences and dietary needs, especially on your special day. Our dedicated team is committed to ensuring every aspect of your wedding is tailored to perfection, including handling allergies and food preferences, such as **Vegan only, Gluten free** or **Halal** menus

We take great care in accommodating a diverse range of dietary requirements, whether it's gluten-free, dairy-free, vegetarian, or any other specific requests. Every menu can be customized to align with your guests' preferences, making sure everyone feels delighted and cherished.

USEFUL INFORMATION

USEFUL INFORMATION

Here you'll find essential links for planning your dream wedding. Explore our Banqueting Menus for culinary delights, take a virtual tour to envision your day, browse FAQs for answers, review terms and conditions, and discover available extras to make your celebration truly exceptional.

5 ACRES
LANDSCAPED
GARDENS

168
LUXURY
BEDROOMS

300+
PARKING
SPACES

BANQUETING MENUS



FULL HOTEL VIRTUAL TOUR



FLOORPLANS



FAQ'S

MARLOW PACKAGE

MINIMUM 50 GUESTS

2025 £100 PER PERSON

2026 £110 / 2027 £120

INCLUDES

WINTERLAKE OR CONSERVATORY HIRE

FOR THE WEDDING BREAKFAST OR EARLY RECEPTION
WHITE TABLE LINEN, NAPKINS AND CUTLERY ARE INCLUDED

ASIAN BANQUETING MENU

CHOOSE ANY OF THE FOLLOWING FROM OUR
EXTENSIVE & AWARD WINNING ASIAN BANQUETING
MENU

- RECEPTION DRINK ON ARRIVAL
- **3 STARTERS** 1 VEGETARIAN AND 2 NON VEGETARIAN STARTERS
- **3 MAIN COURSES** 1 VEGETARIAN AND 2 NON VEGETARIAN MAIN COURSES
- ALL MAINS SERVED WITH RICE, NAAN OR PARATHA, RAITA AND SALAD
- **2 DESSERTS**
- SOFT DRINKS & JUICES THROUGHOUT DINNER
- MASALA TEA & COFFEE AFTER DINNER
- COMPLIMENTARY BRIDAL SUITE ON THE NIGHT OF YOUR WEDDING
- COMPLIMENTARY MENU TASTING FOR TWO

BANQUETING MENUS



ADDITIONAL ITEMS

- | | |
|--|--|
| - DEDICATED SERVICES OF OUR EVENT MANAGER LEADING UP TO THE EVENT AND EVENTS OPERATIONS MANAGER ON THE DAY OF THE EVENT | - PREFERENTIAL ACCOMODATION RATES FOR GUESTS |
| - RED CARPET ENTRANCE | - COMPLIMENTARY ONSITE PARKING |
| - USE OF CAKE STAND & KNIFE | - THE FULL EXPERIENCE OF OUR BANQUETING TEAM |



EXTRA OPTIONS

Elevate your special day with our array of additional extras, meticulously designed to enhance your wedding experience & make your celebration truly unforgettable.

BRIDAL CHANGING ROOM	£POA
CHILDRENS PACKAGES	£POA
STAGE HIRE	£POA
DANCEFLOOR HIRE	£POA
GLASS OF CHAMPAGNE	£15.00PP
GLASS OF SPARKLING WINE	£8.95PP
GLASS OF BUCKS FIZZ	£7.50PP
MASALA CHAI	£3.95PP
3 CANAPES ON ARRIVAL	£11.95PP
5 CANAPES ON ARRIVAL	£15.95PP
7 CANAPES ON ARRIVAL	£19.95PP
5 EVENING BUFFET ITEMS	£30.95PP
8 EVENING BUFFET ITEMS	£35.95PP
12 EVENING BUFFET ITEMS	£49.99PP

LAKESIDE PACKAGE

MINIMUM **70** GUESTS

2025 **£115** PER PERSON

2026 **£125** / 2027 **£135**

INCLUDES

WINTERLAKE OR CONSERVATORY HIRE

FOR THE WEDDING BREAKFAST OR EARLY RECEPTION
WHITE TABLE LINEN, NAPKINS AND CUTLERY ARE
INCLUDED

ASIAN BANQUETING MENU

CHOOSE ANY OF THE FOLLOWING FROM OUR
EXTENSIVE & AWARD WINNING ASIAN BANQUETING
MENU

- **2 CANAPES**
- RECEPTION DRINK ON ARRIVAL
- **4 STARTERS** 2 VEGETARIAN AND 2 NON-VEGETARIAN STARTERS
- **4 MAIN COURSES** 2 VEGETARIAN AND 2 NON VEGETARIAN MAIN COURSES
- ALL MAINS SERVED WITH RICE, NAAN OR PARATHA, RAITA AND SALAD
- **2 DESSERTS**
- SOFT DRINKS & JUICES THROUGHOUT DINNER
- MASALA TEA & COFFEE AFTER DINNER
- COMPLIMENTARY BRIDAL SUITE ON THE NIGHT OF YOUR WEDDING
- COMPLIMENTARY MENU TASTING FOR TWO

BANQUETING MENUS



ADDITIONAL ITEMS

- **DEDICATED SERVICES OF OUR EVENT MANAGER LEADING UP TO THE EVENT AND EVENTS OPERATIONS MANAGER ON THE DAY OF THE EVENT**
- RED CARPET ENTRANCE
- USE OF CAKE STAND & KNIFE
- PREFERENTIAL ACCOMODATION RATES FOR GUESTS
- COMPLIMENTARY ONSITE PARKING
- THE FULL EXPERIENCE OF OUR BANQUETING TEAM

#NOFILTER LAKESIDE @ CROWNE PLAZA® MARLOW

THE FOUNTAIN PACKAGE
MINIMUM **70** GUESTS
2025 **£135** PER PERSON
2026 **£145** / 2027 **£155**

INCLUDES

WINTERLAKE OR CONSERVATORY HIRE

FOR THE WEDDING BREAKFAST OR EARLY RECEPTION
WHITE TABLE LINEN, NAPKINS AND CUTLERY ARE
INCLUDED

ASIAN BANQUETING MENU

CHOOSE ANY OF THE FOLLOWING FROM OUR
EXTENSIVE & AWARD WINNING ASIAN BANQUETING
MENU

- RECEPTION DRINK ON ARRIVAL
- **4 CANAPES** 2 VEGETARIAN AND 2 NON
VEGETARIAN
- **4 STARTERS** 2 VEGETARIAN AND 2 NON
VEGETARIAN STARTERS
- **4 MAIN COURSES** 2 VEGETARIAN AND 2
NON VEGETARIAN MAIN COURSES
- ALL MAINS SERVED WITH RICE, NAAN OR
PARATHA, RAITA AND SALAD
- **2 DESSERTS**
- SOFT DRINKS & JUICES THROUGHOUT
DINNER
- MASALA TEA & COFFEE AFTER DINNER
- STAGE & DANCE FLOOR HIRE INCLUDED
- COMPLIMENTARY BRIDAL SUITE
- COMPLIMENTARY MENU TASTING FOR
FOUR

BANQUETING MENUS



ADDITIONAL ITEMS

- **DEDICATED SERVICES OF OUR EVENT
MANAGER LEADING UP TO THE EVENT
AND EVENTS OPERATIONS MANAGER
ON THE DAY OF THE EVENT**
- RED CARPET ENTRANCE
- USE OF CAKE STAND & KNIFE
- PREFERENTIAL ACCOMODATION RATES
FOR GUESTS
- COMPLIMENTARY ONSITE PARKING
- THE FULL EXPERIENCE OF OUR
BANQUETING TEAM

INCLUDED IN THE FOUNTAIN PACKAGE

First Anniversary Stay including Dinner, Bed & Breakfast in Executive Room

A Spa Day for 2 including two 25-minute treatments

for the Wedding Couple in Quad Wellness & Spa.





CANAPES

- **BHEL PURI** (LF) (v) •
 MINI POPPADOM | TOMATOES | ONION
 TAMARIND | MINT | SEV
- **PANI PURI** (LF) (v)
 PURI FILLED WITH CHOPPED POTATO & CHICKPEAS
- **PANEER & DILL TARTLETS** (v)
 PANEER & LENTILS
- **MANGO SALSA TOAST** (LF) (v)
 CROSTINI | MANGO | POMEGRANATE | ONION
 TOMATO
- **DUCK & ORANGE SALAD** (LF)
 DUCK | HOISIN SAUCE | ORANGE
- **KEEMA TART**
 SLOW COOKED LAMB MINCE | MASHED POTATO
- **MINI POPPADOM WITH DIPS** (v) •
 SERVED WITH VARIOUS CHUTNEYS
- **CHICKEN SATAY** (LF) •
 PEANUT SAUCE
- **VEGETABLE SPRING ROLL** (LF) (v)
- **DUCK SPRING ROLL** (LF)
- **VEGETABLE SAMOSA** (LF) (v)
- **THAI GREEN CHICKEN SKEWER**
 (LF) •
- **LAMB SEEHK KEBAB** •
- **PANEER PAKORA** (v) •
- **SALMON TIKKA SKEWER** •
- **PRAWN TERIYAKI**

(LF) LACTOSE FREE | * GLUTEN FREE | • GLUTEN FREE OPTION AVAILABLE | (V) VEGETARIAN | (VE) VEGAN



VEGETARIAN STARTERS

- **PANEER SHASHLIK .**
COTTAGE CHEESE INTERLAYERED WITH BELL PEPPERS AND ONIONS, MARINATED AND COOKED
- **PANEER TIKKA .**
DICES OF COTTAGE CHEESE MARINATED OVERNIGHT AND COOKED
- **PANEER PAKORA .**
GRAM FLOUR BATTER FRIED COTTAGE CHEESE
- **CHILLI PANEER .**
INDO-CHINESE STYLE PANEER WITH MIXED PEPPERS
- **HARA BARA KEBAB**
PEAS | CHICKPEAS | PANEER | INDIAN SPICES
- **ALOO MINT TIKKI**
POTATO | YOGURT | CHICKPEAS
TAMARIND & MINT SAUCE
- **ONION BHAJI . (LF)**
- **GARLIC & CHILLI MUSHROOMS.**
MUSHROOM | GARLIC | CHILLI | INDIAN HERBS
- **VEGETABLE HAKKA NOODLES (LF)**
NOODLES | INDO CHINESE INSPIRED FLAVOUR
- **GOBI SURKH ANGARA (LF)**
BROCCOLI | CAULIFLOUR | INDO CHINES HERBS
- **VEGETABLE TEMPURA (LF)**
- **CORN & POTATO FRITTER (LF)**
SWEETCORN & POTATO | INDIAN HERBS & SPICES
- **PLAIN MOGO . (LF)**
GARNISHED WITH SALT & CHILLI
- **JEERA MOGO .**
GARNISHED WITH CUMIN AND BLACK PEPPER
- **CHILLI & GARLIC MOGO .**
GARNISHED WITH GARLIC AND CHILLI
- **SPRING ROLLS (LF)**
- **SAMOSA (LF)**
- **ALOO PAPRI CHAAT**
CHICKPEA | POTATO | YOGURT | TAMARIND
- **PALAK PATTI CHAAT . (LF)**
SPINACH | CHICKPEAS | YOGURT | CHAAT MASALA
- **KHASTA ALOO CHAAT**
SAMOSA | POTATO | CHICKPEA | YOGURT | TANGY CHAAT
- **PUNJABI PAKORA . (LF)**

NON-VEGETARIAN STARTERS

POULTRY

- **CHILLI CHICKEN .**
- **CHICKEN TIKKA .**
- **LASANI MURGH TIKKA .**
CLAY OVEN | GARLIC | INDIAN HERBS
- **JEERA MURGH .**
CUMIN | BLACK PEPPER
- **MURGH TIKKA MALAI .**
COOKED IN CREAM WITH GINGER & GARLIC
- **ACHARI TANGDI KEBAB .**
SLOW COOKED CHICKEN LEG
- **HARIYALI MURG TIKKA .**
GINGER | GARLIC | FRESH MINT | CORRIANDER

LAMB

- **TANDOORI LAMB CHOPS (+£5pp) .**
SLOW COOKED IN CLAY OVEN WITH TANDOORI

NON-VEGETARIAN MAIN COURSES

POULTRY

- **LAHORI CHICKEN CURRY .**
CHEF'S SPECIAL HOME STYLE CHICKEN CURRY
- **BUTTER CHICKEN .**
CLASSIC RICH CURRY OF CHICKEN MARINATED IN YOGURT, CREAM AND SPICES
- **CHICKEN DHANSAK .**
MIXED LENTIL & CHICKEN CURRY
- **DELHI STYLE CHICKEN .**
MUSTARD OIL | YOGHURT | GARAM MASALA| GINGER
- **CHICKEN HYDRABADI KORMA .**
CHICKEN CUBES COOKED WITH COCONUT, ONION AND YOGHURT GRAVY
- **CHICKEN JALFREZI .**
DICED CHICKEN BREAST COOKED WITH MIXED PEPPERS, ONION AND SPICES
- **KADAI CHICKEN .**
CHAR GRILLED CHICKEN TIKKA COOKED IN KADAI GRAVY
- **SAAG CHICKEN .**
CHICKEN CUBES COOKED IN CREAMY SPINACH SAUCE
- **CHICKEN CHANGAZI .**
A NORTH INDIAN SPECIALITY | TANDOORI MASALA CASHEW
- **SHORBA WALA MURGH .**
CHICKEN SIMMERED IN TOMATO & ONION GRAVY
- **CHICKEN BHUNA .**
CHEF'S SPECIAL, CHAR GRILLED CHICKEN COOKED IN DRY SPICES FLAVOURED WITH INDIAN SPICES
- **MUGLAI CHICKEN KORMA .**
NORTH INDIAN | CASHEWS | RICH CREAM SAUCE
- **BUTTER MAKHAN WALA MURGH .**
RICH GRAVY | BUTTER, CASHEW & TOMATO SAUCE
- **CHETTINAD CHICKEN CURRY .**
TENDER CHICKEN SIMMERED IN SPICY CURRY

LAMB

- **LAMB ROGAN JOSH .**
LAMB COOKED WITH ONIONS, TOMATO, SPICES, GINGER, GARLIC AND FRESH CORIANDER
- **SAAG GOSHT .**
DICED LAMB COOKED IN A CREAMY SPINACH SAUCE
- **LAMB VINDALOO .**
A SPICY HOT DISH FROM GOA, MADE WITH WHOLE SPICES, VINEGAR AND LOTS OF HOT RED CHILLI
- **MASALA LAAL MAAS .**
LAMB CURRY WITH KASHMIRI CHILLI
- **BHUNA GOSHT .**
SLOW COOKED DICED LAMB | INDIAN HERBS
- **KARAI LAMB .**
DICED LAMB | TOMATO | ONION | PEPPER
- **LAMB JALFREZI .**
LAMB | MIXED PEPPERS
- **BHUNA LAMB .**
DICED LAMB COOKED WITH ONIONS AND PEPPER
- **KEEMA MATTAR .**
MINCED LAMB COOKED WITH FRESH GREEN PEAS

SEAFOOD

- **GOAN FISH CURRY .**
TILAPIA FILLET IN COCONUT, TAMARIND AND SPICES
- **PRAWN MOILEE .**
A MILD CURRY WITH COCONUT AND ONIONS
TEMPERED WITH MUSTARD SEEDS AND CURRY LEAVES
- **PRAWN VARUVAL .**
PRAWNS | MUSTARD SEEDS | CURRY LEAVES
LEMON JUICE

ZAFRANI DUM BIRYANI

- **OUR OWN TAKE ON A FAMILY FAVOURITE**
- **LAMB BIRYANI .**
- **CHICKEN BIRYANI .**
- **PRAWN BIRYANI .**

VEGETARIAN MAIN COURSES

- PANEER LABABDAAR .

DICED COTTAGE CHEESE COOKED IN CREAMY ONION TOMATO GRAVY
- PANEER BHURJI .

GRATED PANEER | INDIAN SPICES & FRESH HERBS
- MATTAR PANEER .

FRESH PEAS AND COTTAGE CHEESE COOKED WITH TOMATOES AND GINGER
- PALAK PANEER .

DICED COTTAGE CHEESE COOKED IN CREAMY SPINACH SAUCE
- PANEER MAKHANWALA .

RICH SAUCE OF TOMATO CASHEWS & CREAM
- PANEER MATTAR MUSHROOM .

HOME STYLE COTTAGE CHEESE, PEAS AND MUSHROOM CURRY
- PALKATTI PHATTANI KORMA .

COTTAGE CHEESE WITH PEAS IN A CREAMY CURRY
- PALAK MUSHROOMS .

MUSHROOMS COOKED IN SPINACH
- ALOO MATTAR . (LF)

HOME STYLE, POTATOES AND GREEN PEA CURRY
- BAINGAN BHARTHA . (LF)

OVEN COOKED MINCED BRINJAL MIXED WITH ONION SPICED MASALA
- ALOO ACHARI BAINGAN . (LF)

PICKLED BABY EGGPLANT COOKED WITH POTATOES
- NAVARAITAN KORMA .

NINE VEGETABLES COOKED WITH CASHEW, ALMOND AND CREAM SAUCE
- ALOO RAVIYA . (LF)

BABY AUBERGINE | BABY POTATO | ONION & TOMATO SAUCE
- VEGETABLE JALFREZI . (LF)

VEGETABLES COOKED IN KADAI MASALA
- KASHMIRI DUM ALOO . (LF)

NEW POTATO | TANDOORI MASALA KASHMIRI RED CHILLI
- MASALA ALOO GOBI . (LF)

NEW POTATOES AND CAULIFLOWER WOK FRIED WITH GINGER AND TOMATOES
- ACHARI MATTAR MUSHROOMS . (LF)

PICKLED WILD MUSHROOMS COOKED WITH GREEN PEAS
- KADHI PAKORA . (LF)

GRAM FLOUR DUMPLINGS COOKED IN YOGHURT
- PESHAWARI CHOLE .

CHICKPEAS | POTATO | TOMATO | GARLIC | GINGER
- PANCHRATAN DAL .

FIVE TYPES OF LENTILS SLOW COOKED WITH INDIAN SPICES
- VEGETABLE KORMA .

SEASONAL VEGETABLES COOKED WITH COCONUT, ONION AND YOGHURT GRAVY
- ALOO BEANS . (LF)

FRENCH BEANS AND BABY POTATOES COOKED WITH ONION, TOMATOES AND SPICES
- DAL MAKHANI .

CHEF'S SPECIAL BLACK LENTILS, COOKED WITH TOMATO AND CREAM
- DAL PANCHMEL .

FIVE TYPES OF LENTILS, COOKED WITH SPICES AND FLAVOURED WITH GINGER AND CORIANDER
- DAL TARKA .

YELLOW LENTILS TEMPERED WITH RED CHILLIES CUMIN AND CORIANDER
- PINDI CHOLE .

CHICKPEAS COOKED WITH DRIED SPICES, ONIONS AND TOMATOES
- MAA DI DAL .

BLACK LENTILS | GINGER | GARLIC | HERBS & SPICES
- RAJMAH KASHMIRI .

RED KIDNEY BEANS COOKED WITH ONIONS, GINGER AND TOMATOES
- PINDI CHANNA . (LF)

CHICKPEAS COOKED WITH ONIONS, GINGER AND TOMATOES
- CHANNA MASALA . (LF)

CHICKPEAS | GINGER | GARLIC | TOMATO | INDIAN SPICES
- VEGETABLE BIRYANI .

OUR OWN TAKE ON A FAMILY FAVOURITE
- PANEER TIKKA BIRYANI .

OUR OWN TAKE ON A FAMILY FAVOURITE

SIDE DISHES & ACCOMPANIMENTS

- RICE SELECTION

-

STEAMED RICE . (LF)

-

LEMON RICE . (LF)

-

JEERA PILAU . (LF)

-

GREEN PEA PILAU . (LF)

-

VEGETABLE PILAU . (LF)
- RAITA SELECTION

-

ONION & CUCUMBER RAITA .

-

CUCUMBER RAITA .

-

BOONDI RAITA

-

POTATO & ONION RAITA .

-

MIXED RAITA .
- BREAD SELECTION

-

PLAIN NAAN

-

BUTTER NAAN

-

GARLIC NAAN

-

CHILLI NAAN

-

PARATHA . (PLAIN)

DESSERT

- RICE KHEER .

RICE COOKED IN MILK, NUTS AND RAISIN FLAVOURED WITH CARDAMOM
- GULAB JAMUN .

SWEET BROWN DUMPLINGS, DIPPED IN SUGAR SYRUP
- GAJAR HALWA .

GRATED CARROTS COOKED IN CONDENSED MILK
- FRESH FRUIT PLATTER . (LF)

CHEF'S SELECTION OF SEASONAL FRUIT

FULL BANQUETING MENUS



(LF) LACTOSE FREE | * GLUTEN FREE | • GLUTEN FREE OPTION AVAILABLE | (V) VEGETARIAN | (VE) VEGAN



IMPORTANT INFORMATION

IMPORTANT INFORMATION

1. OUR TERMS AND CONDITIONS INCLUDE IMPORTANT INFORMATION RELATING TO YOUR BOOKING, INCLUDING CHARGES SHOULD YOU CHOOSE TO CANCEL YOUR BOOKING. PLEASE READ THEM BEFORE BOOKING YOUR WEDDING AND CATERING. A COPY OF THE TERMS AND CONDITIONS ARE SENT WITH THE BOOKING INFORMATION AND ARE ALSO AVAILABLE ON REQUEST.
2. OUR MENU PRICES ARE SUBJECT TO CHANGE PRIOR TO CONFIRMATION OF YOUR BOOKING.
3. WHILST WE PREFER FOR CATERING TO BE PROVIDED IN-HOUSE BY OUR SPECIALITY TANDOOR & CURRY CHEFS, IT IS POSSIBLE TO BRING IN YOUR OWN CONTRACT CATERER SUBJECT TO APPROVAL.
4. ADDITIONAL WINES AND BAR TARIFFS ARE CHARGED AT THE PREVAILING RATE ON THE DATE OF YOUR EVENT
5. WE WILL ENDEAVOUR TO CATER FOR ANY SPECIAL DIETARY REQUIREMENTS LISTED IN YOUR CONFIRMATION OF FINAL DETAILS. HOWEVER, ALL OUR FOOD IS PREPARED IN THE SAME KITCHEN AND WE CANNOT GUARANTEE THE ABSENCE OF CERTAIN FOOD GROUPS OR ALLERGENS (INCLUDING NUTS AND GLUTEN) FROM ANY OF OUR FOOD. FOR A LIST OF THE 14 MOST PROMINENT ALLERGENS KNOWN TO BE INCLUDED WITHIN PARTICULAR DISHES, PLEASE CONTACT EVENTS@CPMARLOW.CO.UK
6. ADDITIONAL CHARGES MAY APPLY FOR KOSHER OR HALAL DISHES BASED ON PREVAILING MARKET RATES. PLEASE REQUEST SPECIFIC PRICES PRIOR TO CONFIRMING YOUR BOOKING.
7. ADDITIONAL CHARGES MAY APPLY FOR WEDDINGS THAT REQUEST A TOTALLY GLUTEN FREE MENU, DEPENDANT ON MENU CHOICES.

FAQ'S

WHATS INCLUDED WITHIN THE ROOM HIRE FEE

ONLY THE CONTRACTED ROOM OR SUITE + TABLES & CHAIRS ARE INCLUDED IN THE ROOM HIRE FEE

WHAT ISNT INCLUDED?

REGISTRAR FEES, CHURCH FEES, DANCE FLOOR, STAGE HIRE AND ANY EXTRAS HIGHLIGHTED AS CHARGABLE TO YOUR PARTY BY THE HOTEL EITHER IN PERSON, IN WRITING OR IN THIS BROCHURE,

ACCESS & DEPARTURE

- WHEN CAN WE HAVE ACCESS TO THE BANQUETING SUITE

YOU MAY HAVE ACCESS TO THE WINTERLAKE SUITE FROM 10.00AM ON THE DAY OF YOUR EVENT & TO THE CONSERVATORY FROM 11.00AM ON THE DAY OF YOUR EVENT. ACCESS OUTSIDE OF THESE HOURS ARE SUBJECT TO APPROVAL IN WRITING BY THE HOTEL AND MAY INCUR ADDITIONAL COSTS.

- WHAT TIME DOES THE PARTY FINISH AND GUESTS DEPART?

THIS DEPENDS ON WHAT OPTION YOU HAVE UNDERTAKEN WITH THE HOTEL; WE RECCOMEND THAT YOUR GUESTS ARRANGE FOR TAXIS TO ARRIVE AROUND **11:30 PM**, IF YOU HAVE CHOSEN A LATE NIGHT OPTION SUCH AS EXCLUSIVE USE OF THE TERRACE BAR, THEN WE ADVISE **12:45 AM**. PLEASE NOTE THAT MUSIC FINISHES AT 12 PM. **EXTENSIONS BEYOND YOUR CONTRACTED DEADLINE WILL RESULT IN A PENALTY OF £500.**

CIVIL CEREMONIES & DRINKS RECEPTION

- DOES THE VENUE HAVE A LICENSE TO HOLD CIVIL CEREMONIES?

YES COUPLES MAY GET MARRIED IN THE WINTERLAKE SUITE, CONSERVATORY AND LAWN SPACES OR FOR MORE INTIMATE CEREMONIES OUR LAKESIDE 3, RIVERSIDE 4 ARE ALSO LICENSED.

- HOW MANY GUESTS CAN BE SEATED FOR CIVIL CEREMONIES IN THE WINTERLAKE, CONSERVATORY, OR LAWNS?

WINTERLAKE 350, CONSERVATORY 200, LAWNS 450+

- CAN WE HAVE LIVE MUSIC AT THE CIVIL CEREMONY?

YOU MAY HAVE LIVE MUSIC SUBJECT TO PROVISION OF IEE CERTIFICATE FOR EQUIPMENT & PUBLIC LIABILITY INSURANCE CERTIFICATE

- CAN WE HAVE PRE-RECORDED MUSIC DURING THE CIVIL CEREMONY AND DRINKS RECEPTION?

YES, THE WINTERLAKE SUITE CONTAINS SPEAKERS THROUGHOUT, AND FOR ALL OTHER AREAS PORTABLE MUSIC SYSTEMS ARE AVAILABLE FOR HIRE.

- WHERE WILL THE DRINKS RECEPTION BE HELD?

THE DRINKS RECEPTION CAN BE HELD IN THE TERRACE BAR WHICH EXLUSIVELY SERVES THE WINTERLAKE SUITE, CONSERVATORY OR LAWNS SUBJECT TO ANY APPLICABLE COSTS.

FAQ'S

WEDDING BREAKFAST AND RECEPTION

- **WHERE DOES THE WEDDING BREAKFAST TAKE PLACE?**
WINTERLAKE SUITE OR CONSERVATORY DEPENDING ON YOUR CONTRACTED ROOM.
- **HOW MANY GUESTS CAN YOU ACCOMMODATE FOR A SIT-DOWN MEAL?**
A MAXIMUM OF 300 GUESTS CAN BE SEATED FOR DINING IN THE WINTERLAKE SUITE DEPENDING ON ENTERTAINMENT OPTIONS
- **ARE YOUR TABLES ROUND?**
THE TABLES ARE ROUND AND MEASURE 5FT BY 6FT; RECTANGULAR TOP TABLES ARE ALSO AVAILABLE.
- **HOW MANY PEOPLE CAN FIT AROUND A TABLE?**
UP TO TEN.
- **WHAT CHAIRS DO YOU PROVIDE AT THE HOTEL?**
WE PROVIDE FABRIC BACKED BANQUETING CHAIRS CUSTOMERS ARE WELCOME TO BRING THEIR OWN DECORATIVE CHAIRS
- **CAN WE PLAY PRE-RECORDED MUSIC DURING THE WEDDING BREAKFAST?**
YES FOR THE WINTERLAKE SUITE; PLEASE BRING AN MP3 PLAYER OR LAPTOP PRELOADED WITH YOUR PLAYLIST WITH AN **AUX** OR **HDMI** CABLE. IF CONTRACTING THE CONSERVATORY & LAWNS, A SEPARATE SPEAKER SYSTEM IS AVAILABLE FOR HIRE.
- **IS THERE A MICROPHONE IN THE HOTEL?**
THERE ARE MICROPHONES AVAILABLE FOR HIRE FOR USE WITH THE SOUND SYSTEM IN THE WINTERLAKE SUITE & A SEPARATE PA SYSTEM IS AVAILABLE FOR HIRE FOR USE IN THE CONSERVATORY & LAWNS.
- **CAN WE PLAY MUSIC ON THE TERRACE?**
NO, FOR THE BENEFIT OF OUR GUESTS MUSIC IS NOT ALLOWED ON THE TERRACE AT ANY TIME.
- **CAN WE INVITE MORE GUESTS FOR THE EVENING?**
YOU ARE WELCOME TO INVITE ADDITIONAL GUESTS IN THE EVENING SUBJECT TO PRIOR AGREEMENT AND PAYMENT OF THE APPLICABLE MEAL OPTION
- **WHERE IS THE BAR LOCATED?**
THE HOTEL HAS 4 BARS, THE MAIN AQUA BAR LOCATED IN THE GROUND FLOOR PUBLIC AREA, THE TERRACE BAR ON THE FIRST FLOOR OF THE EVENTS CENTRE AND TWO MOBILE BARS, ONE FOR USE IN THE CONSERVATORY AND ONE FOR THE WINTERLAKE SUITE.
- **DO YOU HAVE A NOISE INHIBITOR?**
NO.
- **WHAT ARE THE ACOUSTICS IN THE WINTERLAKE LIKE?**
AMAZING!
- **WHERE IS THE DANCE FLOOR?**
THE LOCATION OF THE DANCEFLOOR IS BASED ON THE ROOM CONFIGURATION.
- **DO YOU ALLOW DRY ICE MACHINES OR SMOKE MACHINES?**
WE DO NOT ALLOW DRY ICE MACHINES OR SMOKE MACHINES AS THEY SET OFF THE SMOKE ALARMS! **VIOLATION OF THIS POLICY WILL RESULT IN A FINE OF £500.**

TRANSPORT, SIGNAGE AND CAR PARKING

- **WHAT ARE THE CAR PARKING FACILITIES AT THE VENUE?**
WE HAVE PLENTY OF CAR PARKING SPACES AND CARS MAY BE LEFT OVERNIGHT, AT THE OWNERS' RISK FOR COLLECTION THE NEXT MORNING BY 10.30 AM AT THE LATEST.
- **CAN I ORGANISE FOR A COACH TO PICK UP MY GUESTS?**
YES BUT PLEASE INFORM THE VENUE TEAM SO THEY CAN ARRANGE FOR THE COACH PARKING SPACES TO BE FREE. PLEASE ALSO INFORM YOUR COACH COMPANY TO USE THE DESIGNATED SPACES ONLY.
- **WHERE DOES MY WEDDING CAR ACCESS THE VENUE?**
YOU CAN BE DRIVEN RIGHT UP TO THE FRONT ENTRANCE OF THE HOTEL.
- **CAN WE PUT UP DIRECTIONAL SIGNAGE FOR OUR WEDDING?**
YES, SIGNAGE CAN BE PLACED BY THE TEAM INSIDE THE VENUE. EXTERNAL SIGNAGE IS NOT PERMITTED

FAQ'S

GENERAL

- **DO MY SUPPLIERS/CONTRACTORS NEED TO HAVE PUBLIC LIABILITY INSURANCE?**
YES, IT IS YOUR RESPONSIBILITY TO CHECK THAT ALL CONTRACTORS/SUPPLIERS YOU EMPLOY HAVE PUBLIC LIABILITY INSURANCE, ALL ELECTRICAL EQUIPMENT IS PAT TESTED AND SUPPLIERS COMPLY WITH HEALTH AND SAFETY REGULATIONS. PLEASE NOTE THE FABRICATION OF THE VENUE AND ITS FIXTURES AND FITTINGS CANNOT BE DAMAGED IN ANY WAY, MOVED OR RE-LOCATED. CHARGES WILL BE LEVVIED FOR ANY DAMAGE INCURRED DURING YOUR EVENT.
- **CAN I PUT UP MY OWN LIGHTING AND OTHER DECORATIONS?**
YES, BUT IT IS YOUR RESPONSIBILITY TO ENSURE THAT YOU COMPLY WITH ALL HEALTH AND SAFETY REGULATIONS E.G. FIRE PROOFING DECORATIONS AND ALL ELECTRICAL EQUIPMENT IS PAT TESTED. YOU WILL ALSO NEED PUBLIC LIABILITY INSURANCE. WE ADVISE THAT YOU USE FULLY INSURED CONTRACTORS AS ABOVE. NOTHING MAY BE AFFIXED TO THE WALLS OR DOORS **VIOLATION OF THIS POLICY WILL RESULT IN A FINE OF £500.**
- **CAN I BORROW A LADDER TO PUT UP MY DECORATIONS?**
NO, DUE TO HEALTH AND SAFETY REGULATIONS WE CANNOT LEND LADDERS.
- **DO YOU ALLOW MANDAP CANDLES OR OTHER OPEN FLAMES INSIDE THE HOTEL?**
YES, BUT IN ORDER TO COMPLY WITH CROWNE PLAZA MARLOW'S FIRE INSURANCE REGULATIONS THE FOLLOWING APPLIES: MANDAP CANDLES MUST BE EXTINGUISHED AT THE END OF THE CEREMONY AND THE FLAME CANNOT BE TALLER THAN 3-5CM, **VIOLATION OF THIS POLICY WILL RESULT IN A FINE OF £500.**
- **DO I NEED WEDDING INSURANCE?**
THIS IS STRONGLY RECOMMENDED. TO COMPARE WEDDING INSURANCE PRICES PLEASE VISIT: WWW.COMPARE-WEDDINGINSURANCE.COM.
- **WILL THERE BE SHOW ROUNDS ON MY WEDDING DAY?**
THERE MAY BE SHOW ROUNDS BOOKED IN ON YOUR WEDDING DAY BUT THESE WILL FINISH BY MIDDAY.
- **IS THE VENUE HEATED?**
WE HAVE A STATE OF THE ART DAIKIN HEATING SYSTEM THROUGHOUT THE HOTEL
- **DOES THE VENUE HAVE AIR CONDITIONING?**
WE HAVE A STATE OF THE ART COOLING SYSTEM THROUGHOUT THE HOTEL
- **DO YOU HAVE DISABLED FACILITIES?**
THE FIRST FLOOR EVENTS CENTRE IS ACCESSIBLE VIA STAIRS AND A LIFT. WE HAVE DISABLED TOILET FACILITIES ADJACENT TO THE THE GROUND FLOOR PUBLIC AREAS AND ON THE FIRST FLOOR EVENTS CENTRE LEVEL.
- **WHERE CAN GUESTS LEAVE COATS?**
THE HOTEL CAN SET UP A COAT CHECK ON REQUEST
- **WHAT PHOTOGRAPHIC LOCATIONS ARE AVAILABLE?**
THERE ARE SOME TRULY WONDERFUL PHOTOGRAPHIC OPPORTUNITIES BOTH INSIDE AND OUTSIDE, INCLUDING VARIOUS LAKE SIDE AND LOVELY GARDEN SHOTS.
- **CAN WE RELEASE BALLOONS AND/OR SKY LANTERNS OUTSIDE?**
UNFORTUNATELY IT IS NOT POSSIBLE AS THESE ARE HAZARDOUS TO THE WILDLIFE ON THE ESTATE.
- **HAVE YOU ANY FACILITIES FOR BABIES?**
THERE ARE FOUR HIGHCHAIRS AND 2 BABY CHANGING FACILITIES IN THE HOTEL.
- **IS CROWNE PLAZA MARLOW A SMOKE & VAPE-FREE ENVIRONMENT?**
IN LINE WITH THE LAW, SMOKING IS NOT ALLOWED ANYWHERE INSIDE THE BUILDINGS, GUESTS CAN SMOKE IN DESIGNATED AREAS OUTSIDE AND RECEPTACLES ARE PROVIDED. NO SMOKING OR VAPING IS ALLOWED ON THE WINTERLAKE TERRACE.
- **DO YOU ALLOW CONFETTI?**
AS WE HAVE GRAVEL PATHS WE REGRET THAT WE CANNOT ALLOW CONFETTI. PLEASE INFORM YOUR GUESTS. WE DO ALLOW FRESH OR DRIED FLOWER PETALS BUT REQUEST THAT THESE ARE THROWN OUTSIDE THE HOTEL OR ON THE TERRACE WHICH CAN BE SWEEPED. CONFETTI BOMBS ARE NOT ALLOWED INSIDE OR OUTSIDE AT THE VENUE AND CARRY A £500 PENALTY FEE.
- **DO YOU ALLOW FIREWORKS?**
WE ARE MORE THAN HAPPY TO ACCOMODATE FIREWORKS OUT OF CONSIDERATION TO OUR NEIGHBOURS THESE MUST END BEFORE 10:30 PM. PLEASE ASK FOR DETAILS OF OUR PREFERRED SUPPLIER. FIREWORKS OVER THE LAKE ARE TRULY SPECTACULAR.

FAQ'S

GENERAL CONTINUED

- **ARE DOGS ALLOWED?**

OWING TO THE NATURE OF THE ESTATE, DOGS ARE NOT PERMITTED.

- **DO WE HAVE TO USE THE AUTHORISED SUPPLIERS?**

NO. PLEASE ENSURE ALL SUPPLIERS USED, HAVE £5 MILLION PUBLIC LIABILITY INSURANCE AND COMPLY WITH ALL HEALTH AND SAFETY REGULATIONS.

- **DO YOU ALLOW DRONES?**

PERMISSION TO USE A DRONE MAY GRANTED ON A CASE BY CASE BASIS COMMERCIAL DRONE INSURANCE AND/OR PUBLIC LIABILITY INSURANCE MUST BE IN PLACE. THE VENUE MUST BE PROVIDED WITH A COPY OF THE RAW VIDEO FOOTAGE